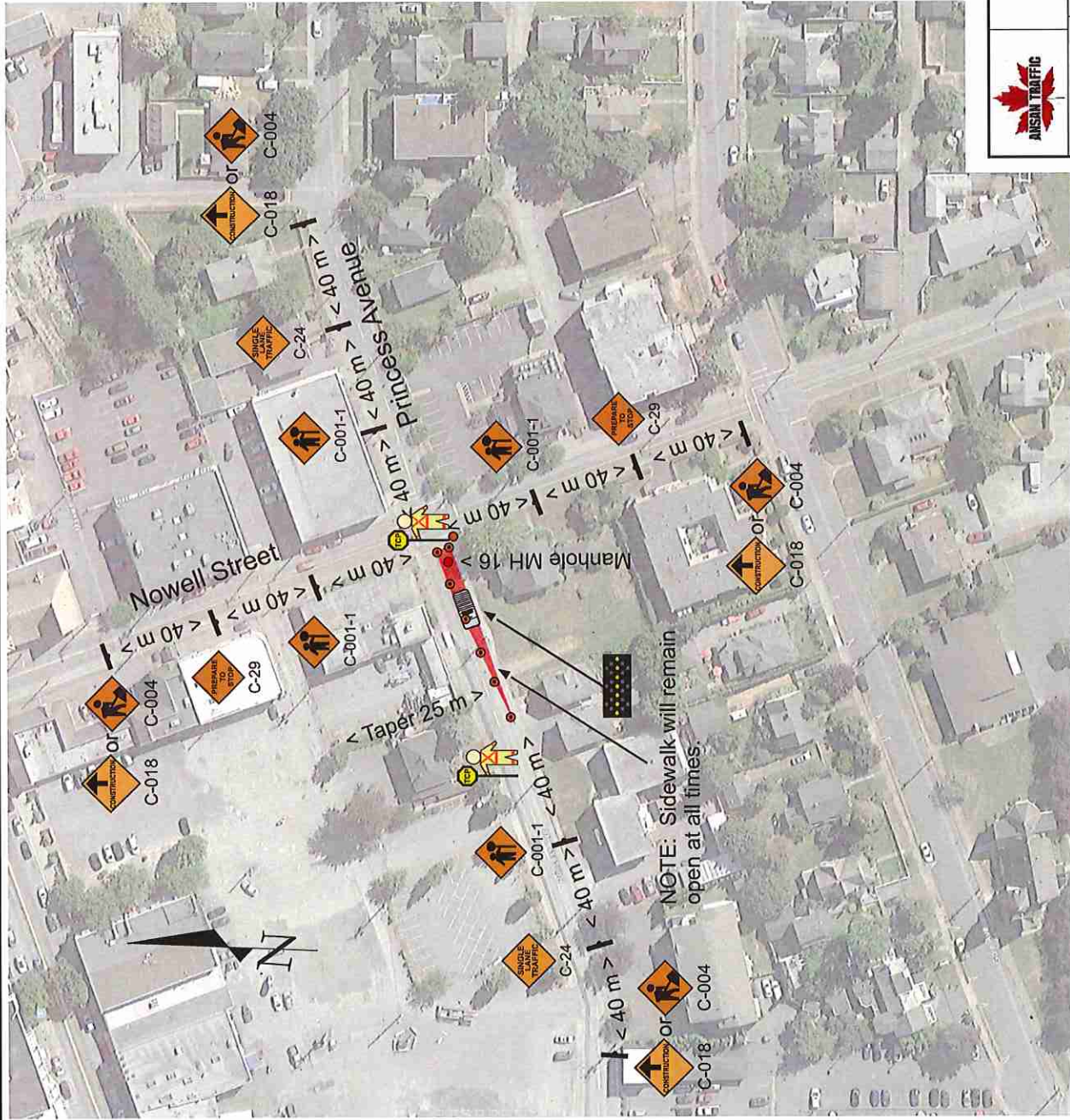


**NOTES:**

- 1. Description & Location:** AFL will be installing new electrical cabinets and conduit on Nowell Street on the West side south of Princess Street.
- Part of this work requires access to Mahole MH 16 in the Eastbound lane of Princess Avenue immediately West of Nowell Street. The Eastbound lane of Princess Avenue will be closed and traffic conducted in a Single Lane Alternating fashion around the works.
- Traffic at this location is restricted to 50 km/h
- Traffic control will be provided by two TCP's and one Lane Closure Vehicle.
- No bus stops, sidewalks or cycling lanes are affected.
- Sign location and spacing will, as far as is possible, be in conformity with the requirements of the Traffic Management Manual for Work on Roadways (the Manual) (2015 Interim) as published by the MoTI. Changes to layout of signage may be made by the TCP in charge to accommodate traffic and local conditions on site at the time.

NOTE: this Traffic Plan is not an order of TCP's or equipment. It is the Contractor's responsibility to order the necessary assets at least 24 hours prior to the intended start time of the works.



NOTE: Sidewalk will remain open at all times.

**LEGEND**

- TRAFFIC CONTROL PERSON
- TRAFFIC CONE TYPE 'D'
- TRAFFIC SIGN LOCATION
- WORK AREA
- LANE CLOSURE TRUCK
- TRUCK MOUNTED FAB
- TRAFFIC FLOW
- OVERHEAD CABLE

This Traffic Plan has been prepared by Ansan Industries Ltd. (Ansan) based, in part, on information provided by third parties. Every effort has been made to ensure that the plan conforms to the requirements of the Motor Vehicle Act [RSBC 1966] Chapter 318 and Regulations and to the BC Traffic Control Manual. Ansan assumes no responsibility for the uses to which this plan is put by third parties not directly under the supervision of Ansan or its agents.



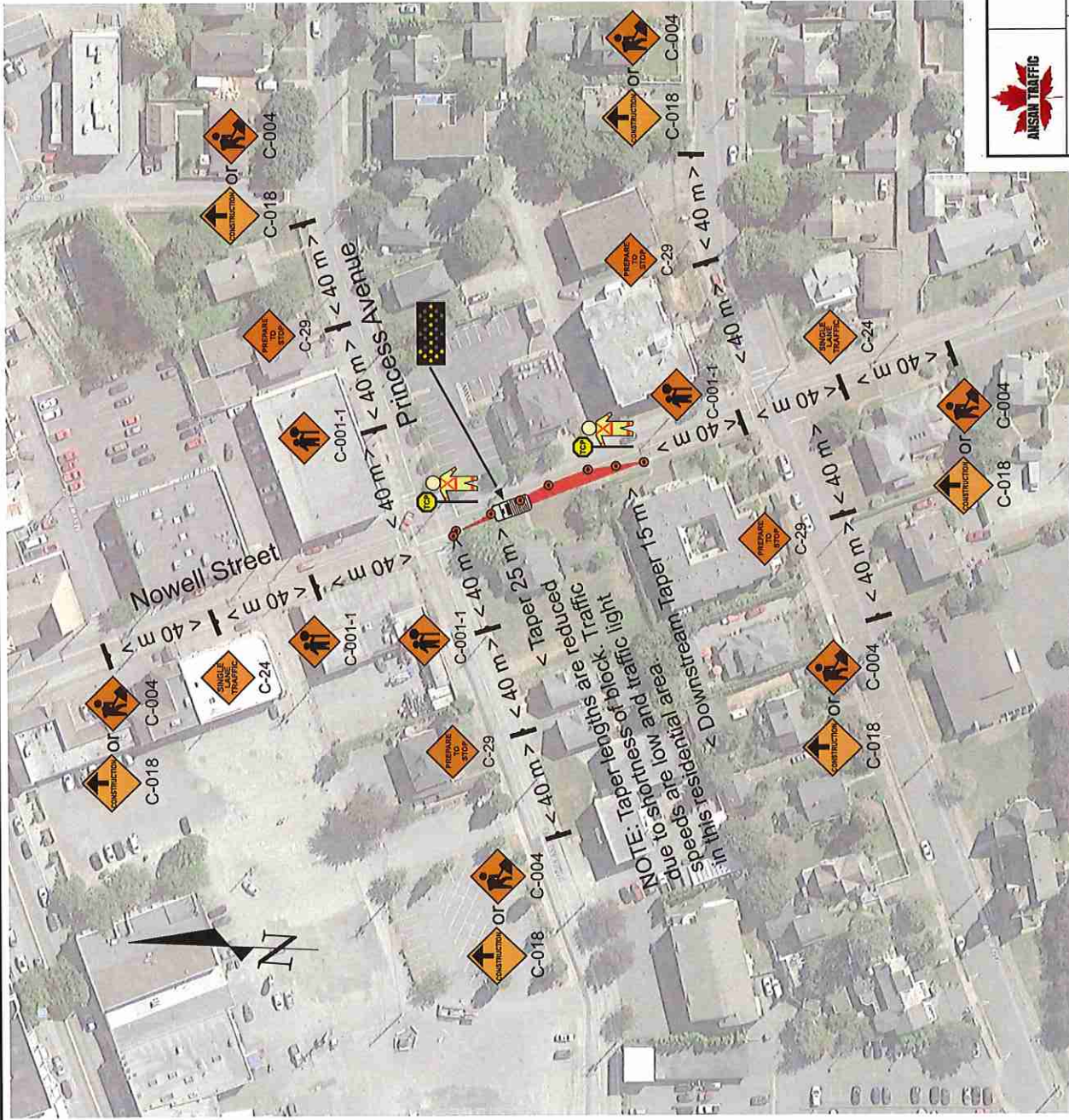
Ansan Industries Ltd.  
2600 Viking Way, Richmond,  
British Columbia V6V 1N2

|  |   |
|--|---|
| No: 17-1097-07   | Customer: AFL Construction Services       |
| Date: 4 April 2017   | Contact: Kelly Buchanan Tel: 250-485-7330 |
| Title: Cabinet and Conduit Installation - CLWK 2011A-2609390<br>Nowell Street at Princess Avenue<br>Chilliwack, British Columbia |   |
| Traffic Tech: Flynn Mairr  | Dwg By: R. Flynn Mairr B.Sc.(Eng)         |
| File: Plan 17-1097-07.cdr  |   |

**NOTES:**

- 1. Description & Location:** AFL will be installing new electrical cabinets and conduit on Nowell Street on the West side south of Princess Street.
- The Southbound lane of Nowell will be closed and traffic conducted in a Single Lane Alternating fashion.
- Traffic at this location is restricted to 50 km/h
- Traffic control will be provided by two TCP's and one Lane Closure Vehicle.
- No bus stops, sidewalks or cycling lanes are affected.
- Sign location and spacing will, as far as is possible, be in conformity with the requirements of the Traffic Management Manual for Work on Roadways (the Manual) (2015 Interim) as published by the MoTI. Changes to layout of signage may be made by the TCP in charge to accommodate traffic and local conditions on site at the time.

NOTE: this Traffic Plan is not an order of TCP's or equipment. It is the Contractor's responsibility to order the necessary assets at least 24 hours prior to the intended start time of the works.



**LEGEND**

|  |                        |  |                   |  |                |  |           |  |              |
|--|------------------------|--|-------------------|--|----------------|--|-----------|--|--------------|
|  | TRAFFIC CONTROL PERSON |  | TRAFFIC CONE      |  | TYPE 'D'       |  | WORK AREA |  | TRAFFIC FLOW |
|  | LANE CLOSURE TRUCK     |  | TRUCK MOUNTED FAB |  | OVERHEAD CABLE |  |           |  |              |
|  | TRAFFIC SIGN LOCATION  |  |                   |  |                |  |           |  |              |

This Traffic Plan has been prepared by Ansan Industries Ltd. (Ansan) based, in part, on information provided by third parties. Every effort has been made to ensure that the plan conforms to the requirements of the Motor Vehicle Act [RSBC 1986] Chapter 318 and Regulations and to the BC Traffic Control Manual. Ansan assumes no responsibility for the uses to which this plan is put by third parties not directly under the supervision of Ansan or its agents.

|  |   |                                     |
|--|---|-------------------------------------|
|  | Ansan Industries Ltd.<br>2600 Viking Way, Richmond,<br>British Columbia V6V 1N2 |                                     |
|  | No. 17-1097-06  | Customer: AFL Construction Services |
| Date: 4 April 2017   | Contact: Kelly Buchanan   | Tel: 250-485-7330                   |
| Title: Cabinet and Conduit Installation - CLWK 2011A-2609390<br>Nowell Street at Princess Avenue<br>Chilliwack, British Columbia |   |                                     |
| Traffic Tech: Flynn Marr   | Dwg By: R. Flynn Marr B.Sc.(Eng)  |                                     |
| File: Plan 17-1097-06.cdr  |   |                                     |